

# LAKEWOOD OF BOCA WEST P.U.D.

IN PART OF SECTIONS 9 & 16, TWP. 47 S., RGE. 42 E.

PALM BEACH COUNTY, FLORIDA  
IN 5 SHEETS SHEET NO. 2

GEE & JENSON  
CONSULTING ENGINEERS, INC.  
WEST PALM BEACH, FLORIDA  
NOVEMBER 1973

53

N



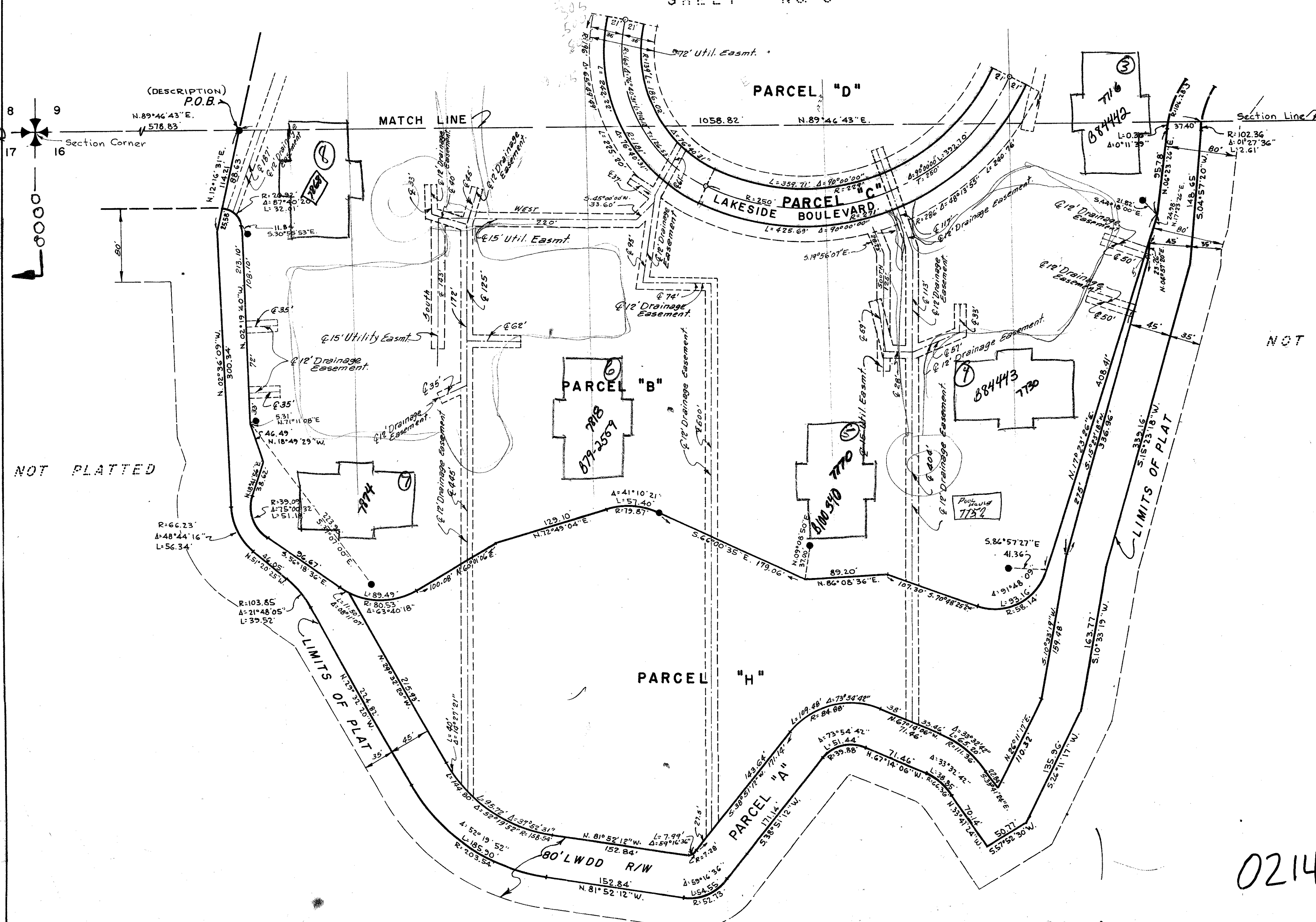
SCALE IN FEET  
SCALE: 1" = 60'

200

STATE OF FLORIDA  
COUNTY OF PALM BEACH

This Plat was filed for record at \_\_\_\_\_ M.  
this \_\_\_\_\_ day of \_\_\_\_\_, 1974,  
and duly recorded in Plat Book No. \_\_\_\_\_  
on page \_\_\_\_\_  
JOHN B. DUNKLE, Clerk Circuit Court  
By \_\_\_\_\_, D.C.

SHEET NO. 3



### NOTE

- denotes Permanent Reference Monument
- denotes Permanent Control Point
- All bearings shown are based on an assumed meridian.
- Where Drainage and Utility Easements cross the Drainage Easements shall take precedence.
- Drainage Easements shall be located with the  $\odot$  coincident with the underground drainage facilities.

NOT PLATTED

NOT PLATTED

NOT PLATTED

LAKEWOOD, BOCA WEST (P.U.D.)

0214-327 / 200

DRAWING NUMBER  
50/260

DRAWING NUMBER

DRAWING NUMBER

DRAWING NUMBER